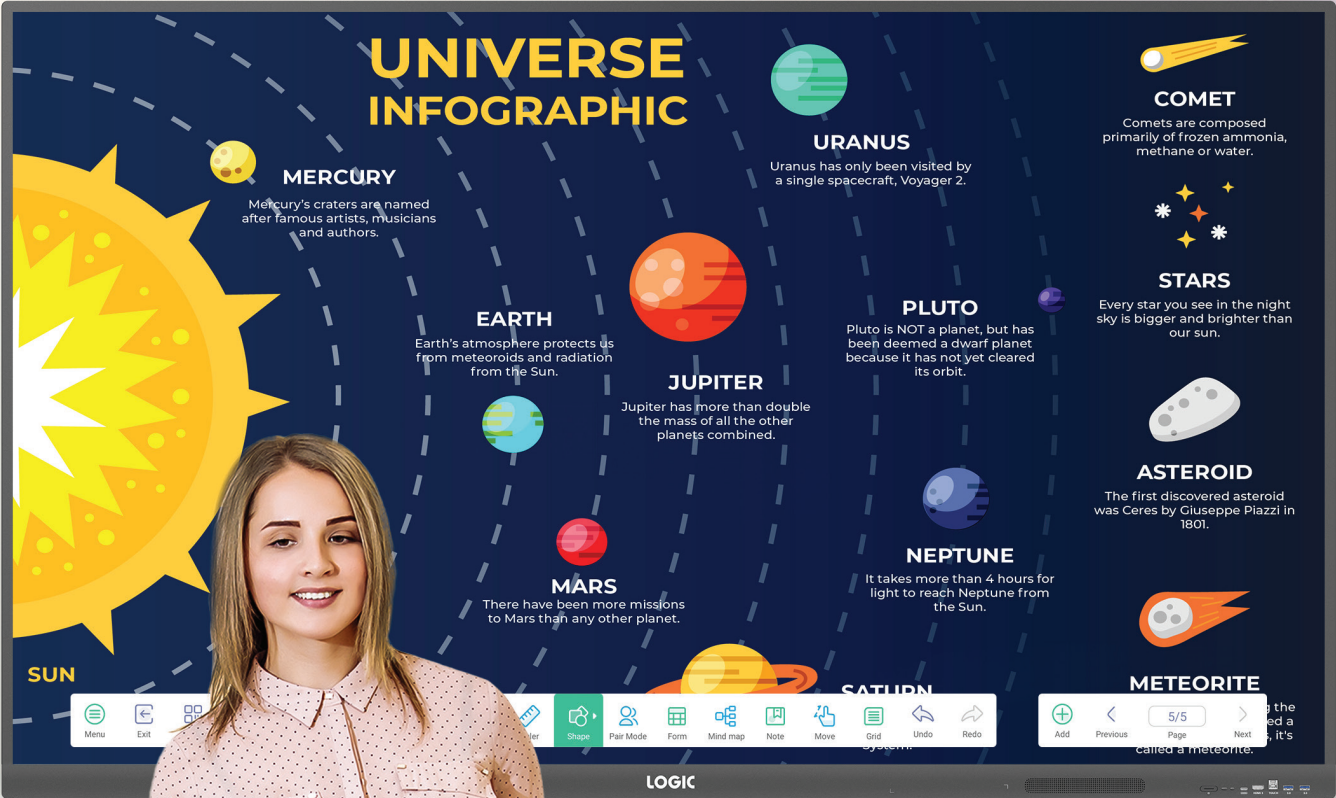


INTERACTIVE DISPLAYS

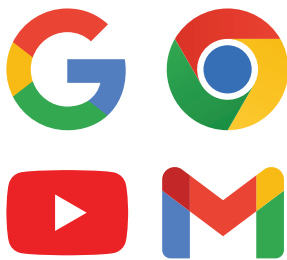
HX Series



Google EDLA
Certified



Google Play



Core Service



Collaboration Tools



Google EDLA-Certified: Elevate Your Experience with Seamless Connectivity

The IFPD features Google EDLA-certified Android 14, ensuring a secure and efficient operating system tailored for educational and professional use. This certification guarantees compatibility, device management, and security, allowing access to a vast array of applications from the Google Play Store. With its intuitive interface and advanced features, users can enhance productivity and collaboration seamlessly.



Google Enterprise Partner



Download essential work apps directly from the Google Play Store

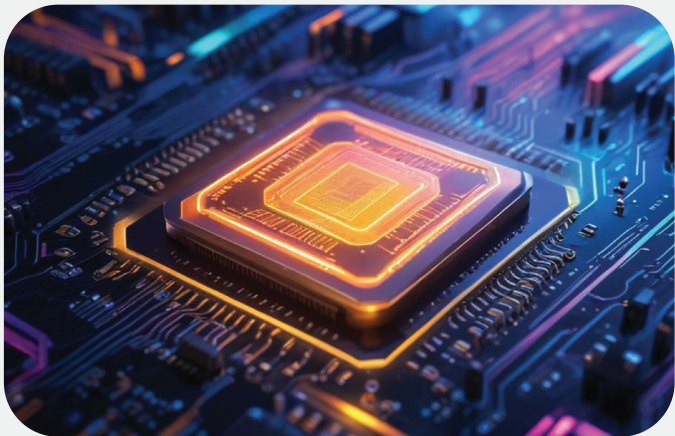


Empower Collaboration with Android 14

The IFPD operates on Android 14.0, offering a user-friendly interface and enhanced performance for seamless interaction. This latest version provides robust security features, improved multitasking capabilities, and access to a wide range of apps, empowering users to optimize their workflow and boost productivity in any environment.

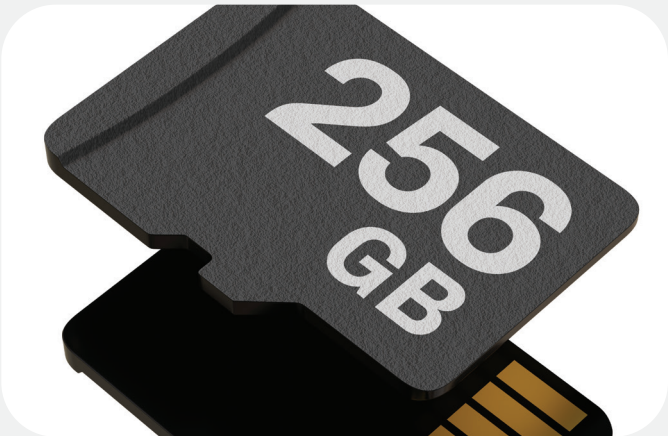


KEY FEATURES



CPU: Core Cortex-A73x4

The ARM Cortex-A73 quad-core processor delivers high-performance computing with efficient power consumption. Ideal for interactive displays, it ensures smooth multitasking, responsive touch inputs, and fast data processing for an enhanced user experience.



Built-in TF Card Slot

The built-in TF card slot supports expandable storage up to 256GB/512GB, providing ample space for storing presentations, videos, and important files. This flexibility enhances the device's storage capacity, making it ideal for high-volume content management.



Built-in Speakers

The built-in front-facing 2x16W (Typ) speakers deliver clear and powerful audio, enhancing presentations and multimedia content with rich sound quality. Perfect for meeting rooms and classrooms, they ensure an immersive audio experience without the need for external speakers.

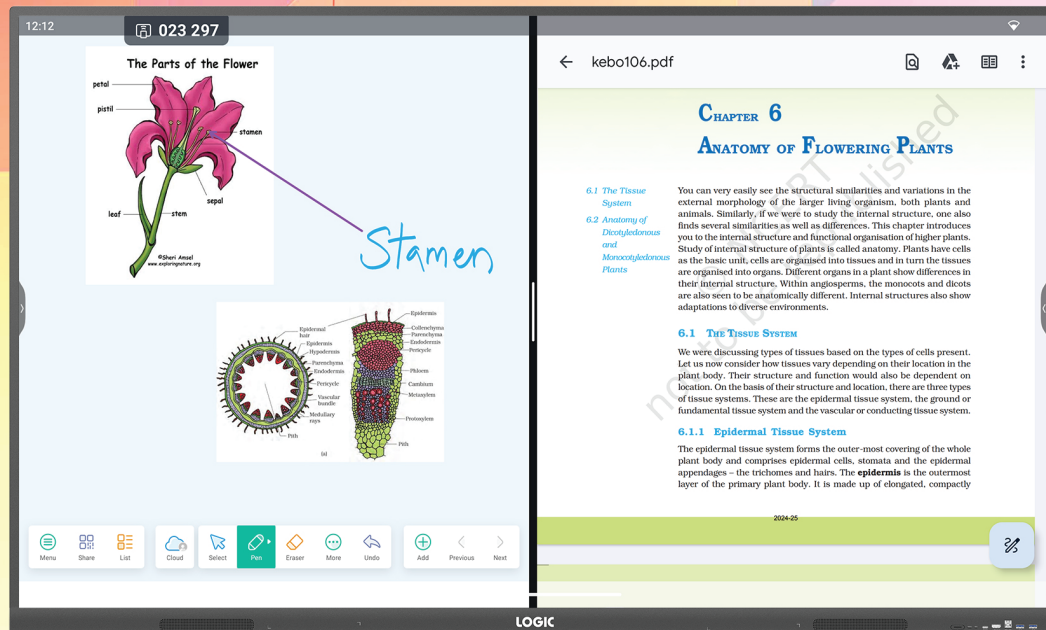


Multi-touch Points

The interactive display supports up to 40 touch points and 20 writing points simultaneously, allowing multiple users to collaborate seamlessly. This high-touch capability enhances group interactivity, making it ideal for classrooms, meetings, and creative sessions.

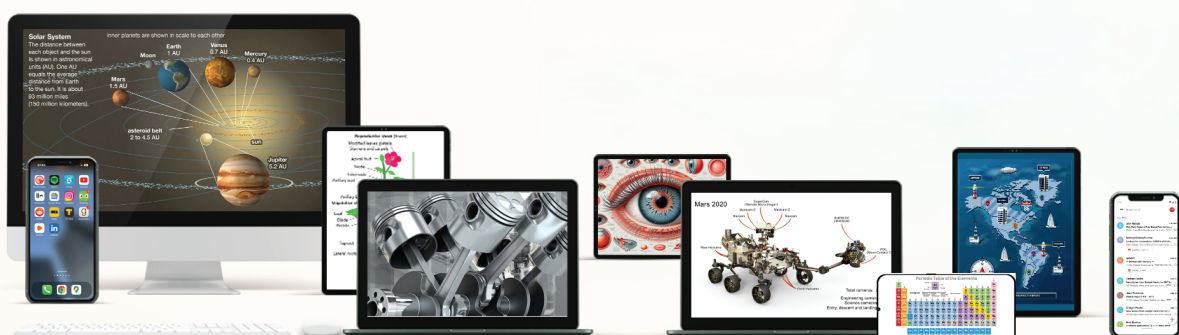
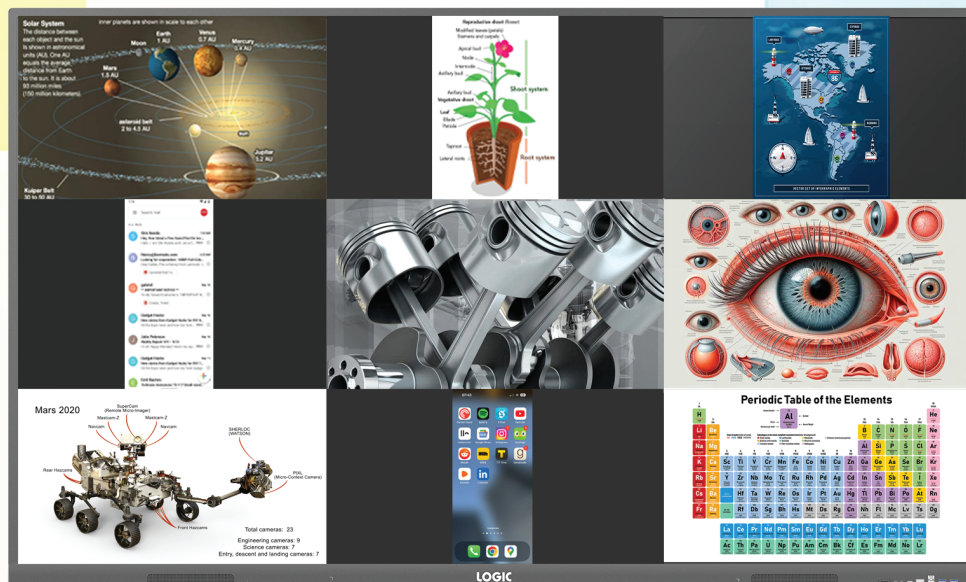
Dual Views, Double Productivity

The split-screen mode enhances discussion efficiency by allowing users to work with two applications side-by-side. You can whiteboard on one side while referencing other resources on the opposite side, streamlining collaboration and multitasking.



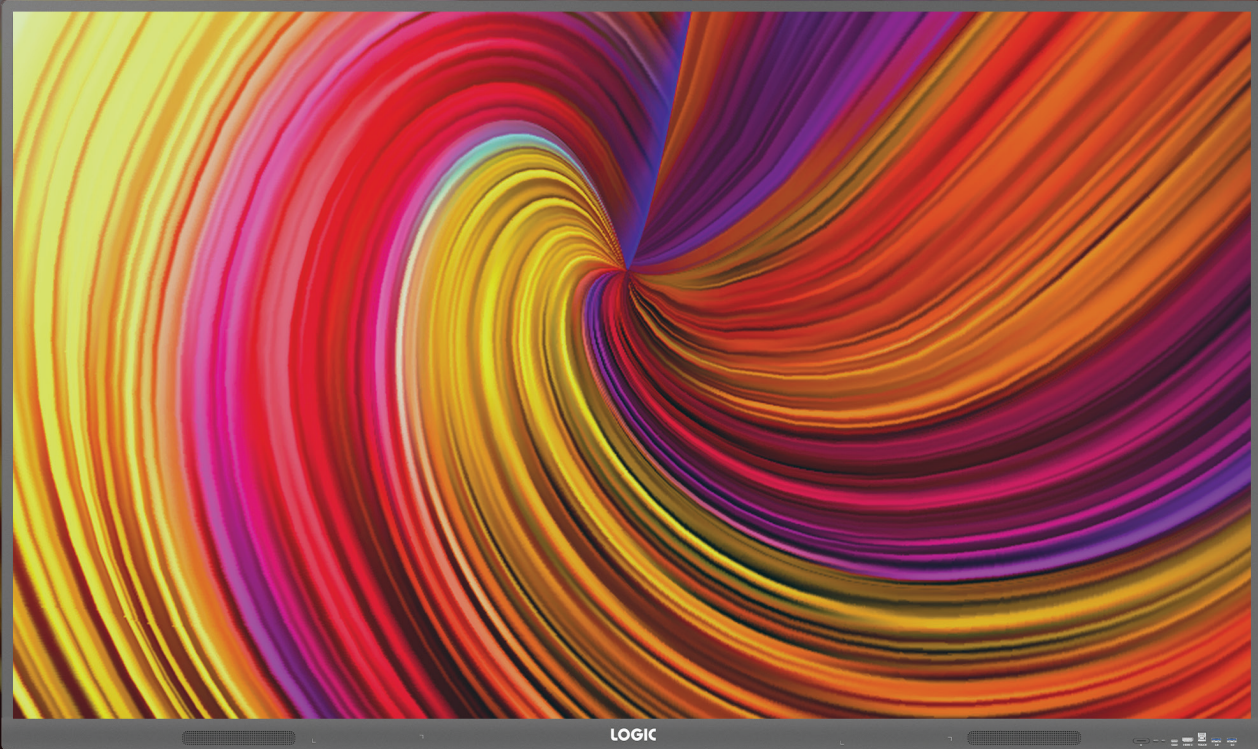
Wireless Sharing, Limitless Collaboration: Sync, Share, and Collaborate Across 9 Screens Effortlessly

The IFPD's built-in wireless sharing application allows seamless content sharing across up to 9 screens simultaneously, regardless of the operating system. Teams can easily share media, photos, documents, and even live camera feeds, enhancing real-time collaboration. Users can also sync their desktop for full-screen mirroring, making presentations and group work more efficient and dynamic. This cross-platform compatibility ensures smooth interactions between different devices without the need for additional cables or adapters.



4K Ultra-Clear Visuals and Precision

The IFPD supports a stunning 3840x2160 resolution with a 4K UI and 4K annotation, delivering ultra-clear visuals and precise detailing. This high-definition display ensures exceptional clarity for presentations, annotations, and multimedia, enhancing both productivity and engagement.



Note Pro: Revolutionizing Ideas with Digital Innovation

The built-in Note Pro application revolutionizes collaboration, creativity, and productivity by blending the ease of a traditional whiteboard with advanced digital tools. This dynamic platform enhances ideation, planning, and communication for a seamless user experience.



Note Pro:

YOUR IDEAS, LIMITLESS CANVAS

Key features

Advanced Search



Seamlessly explore images and videos with powerful search capabilities.

Versatile Content Import



Effortlessly import files such as PPT, PDF, audio, video, notebooks, and flipcharts to enhance learning sessions.

Subject-Specific Simulation Tools



Utilize tools designed for various subjects to enrich interactive teaching experiences.

Regional Language Compatibility



Support for multiple regional languages, ensuring inclusivity and accessibility.

Effortless Note-Taking



Easily capture and share notes through QR codes in both image and PDF formats, simplifying the process for students and educators alike.

On-Board Geometric Tools



Access a variety of built-in geometric tools directly on the board for precise shapes, measurements, and diagrams.

Text-to-Speech Integration



Enable on-board text-to-speech functionality to cater to diverse learning needs.

Translate Feature



Instantly translate content into multiple languages, making learning accessible to a diverse audience.

Gamified Quizzes Creation



Design engaging quizzes with the activity tool to create interactive and fun learning experiences.

Cloud Storage



Convenient cloud storage options for saving and accessing resources anytime, anywhere.

Built-in 2D & 3D Shapes



Includes pre-built 2D and 3D shape libraries for dynamic content creation.

NCERT e-Book Integration



Direct access to built-in NCERT e-books for seamless curriculum alignment.

GeoGebra Mathematics Tool



Integrated dynamic mathematics tool for advanced mathematical learning and visualization.

150+ Additional Features



Explore a comprehensive suite of tools to enhance teaching and learning experiences.



Device Management System

The web-based software provides advantageous solutions to handle your interactive flat panels. You can enjoy multiple management functions which include real-time monitoring, panel grouping, brightness & volume control, flashing the notification & multimedia messages in one go and many more functions.



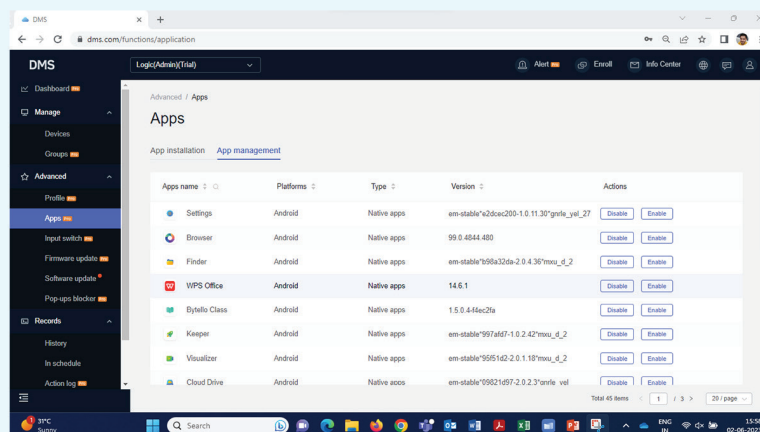
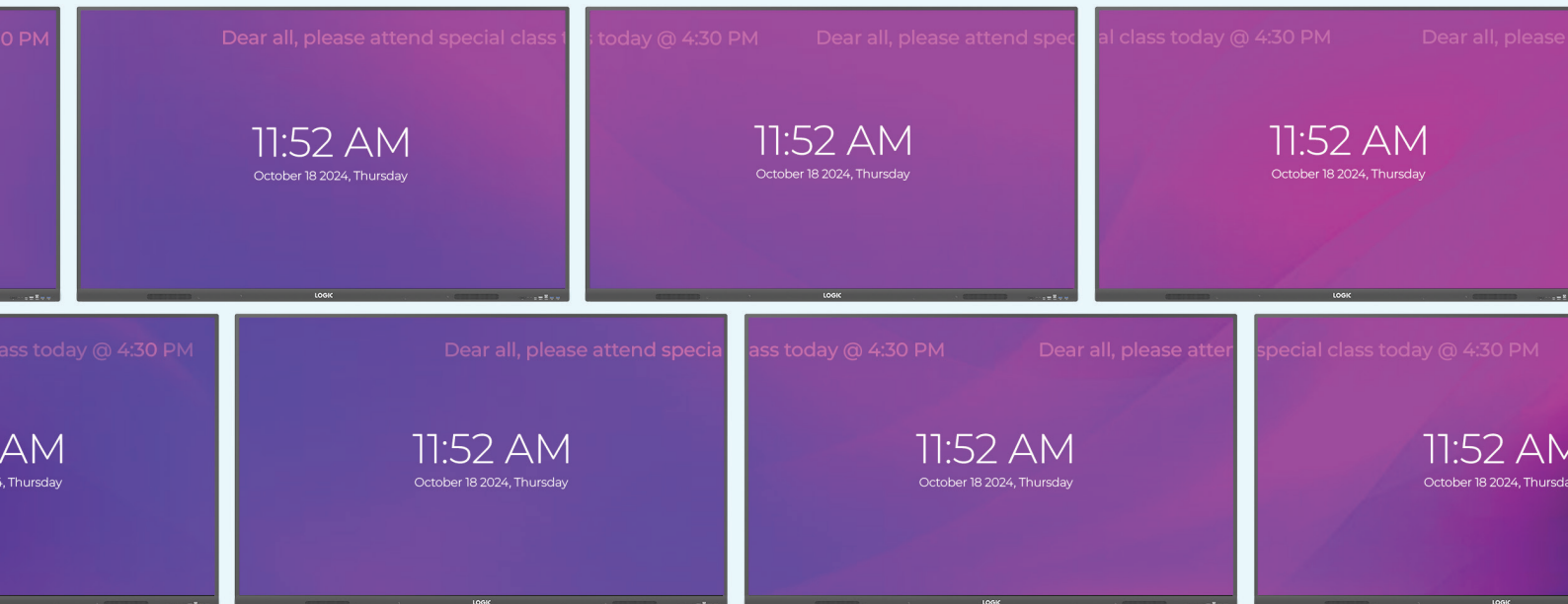
Impressive Data Insights & Analytics

View the operations information for each device in a straightforward interface. Using a web-based DMS application you can collect statistics for useful insights or to inspect panels for errors.



Unified Control, Instant Notifications

Manage all applications effortlessly from a single interface with absolute control. Enable, disable, install, and update apps across multiple panels simultaneously with quick remote access. Instantly share important notifications without interrupting ongoing classes, ensuring smooth and uninterrupted learning.



PRODUCT SPECIFICATION

	MODEL	LT-IR65HX	LT-IR75HX	LT-IR86HX
Display	Size	65 Inch	75 Inch	86 Inch
	Panel Type	VA	VA	IPS
	Back Light Unit	DLED	DLED	DLED
	Response Time	6.5ms	6.5ms	8ms
	Aspect Ratio	16:09	16:09	16:09
	Display Area(HxV)	1428.48×803.52(mm)	1650.24×928.26(mm)	1895.04×1065.96(mm)
	Pixel Pitch	0.372×0.372(mm)	0.42975×0.42975(mm)	0.4935×0.4935(mm)
	Resolution	3840×2160	3840×2160	3840×2160
	Refeshing Frequency	60Hz	60Hz	60Hz
	Display Color	1.07B	1.07B	1.07B
	Bit Rate	10 bit	10 bit	10 bit
	NTSC Gamut	72%	72%	72%
	Surface Hardness	4mm Anti-Glare (Toughened Glass)		
	Contrast Ratio	5000:1	5000:1	5000:1
	Viewing Angle	178°(H/V)	178°(H/V)	178°(H/V)
Operating System	Brightness with glass(min)	400 cd/m ²	400 cd/m ²	400 cd/m ²
	Brightness with glass(typ)	450 cd/m ²	450 cd/m ²	450 cd/m ²
	Life Time	≥50000 Hours	≥50000 Hours	≥50000 Hours
	System Version	Android 14.0	Android 14.0	Android 14.0
	RAM	8 GB	8 GB	8 GB
Touch System	ROM	128 GB On-Board + (Expandable Memory up to 256/512GB)		
	CPU	ARM Core Cortex-A73 x 4	ARM Core Cortex-A73 x 4	ARM Core Cortex-A73 x 4
	GPU	Mali G52 MC1	Mali G52 MC1	Mali G52 MC1
	Sensing Type	Infrared recognition	Infrared recognition	Infrared recognition
	Touch Recognition	Passive stylus	Passive stylus	Passive stylus
Audio	Response Time	≤8ms	≤8ms	≤8ms
	Accuracy	±1.5mm	±1.5mm	±1.5mm
	Touch Point	40	40	40
	Writing Point	20	20	20
	Minimum object Size	3mm	3mm	3mm
	Writing Height	≤2mm	≤2mm	≤2mm
	Interpolation Resolution (WxH)	32768×32768	32768×32768	32768×32768
	Gesture Support	Yes	Yes	Yes
	Supporting OS	Windows11/Windows10/Windows8/Windows7/Windows XP/Linux/Mac OS X/Android/Chrome		
	Audio Output	2.0	2.0	2.0
Power	Output Power (Typ)	2×16W	2×16W	2×16W
	Output Power (Max)	2×20W	2×20W	2×20W
Power	Power Supply	100-240V~50/60Hz 4.0A	100-240V~50/60Hz 4.0A	100-240V~50/60Hz 4.0A
	Power Consumption (Typ/Max)	180W/335W	230W/385W	245W/400W
I/O Interface	Standby Power	≤0.5W	≤0.5W	≤0.5W
	HDMI IN	3	3	3
	HDMI OUT	1	1	1
	USB 2.0	2	2	2
	USB Player (Media) type-C (65W)	2	2	2
	USB 3.0	3	3	3
	TOUCH 2.0	3	3	3
	VGA IN	1	1	1
	DP IN	1	1	1
	AUDIO IN	1	1	1
	AUDIO OUT	1	1	1
	SPDIF	1	1	1
	RS232	1	1	1
	RJ45 IN	1	1	1
	RJ45 OUT	1	1	1
Physical Specifications	TF Card	1	1	1
	Product Dimension (L×H×D)	1491×898×87(mm)	1712×1022×87(mm)	1957×1159.9×97.4(mm)
	Package Dimension (L×W×H)	1628×185×1005(mm)	1863×225×1148(mm)	2110×225×1291(mm)
	VESA	600×400(mm)	800×400(mm)	800×600(mm)
	Net Weight	36.15kg	49.15kg	53.55kg
Accessories	Gross Weight	41.70kg	56.60kg	63.75kg
	Power Cord	1	1	1
	HDMI Cable	1	1	1
	USB Touch Cable (Type A-B)	1	1	1
	Remote Control	1	1	1
	Wall Mount Bracket	1	1	1
	Writing Pen/Stylus	1 Pair SW30	1 Pair SW30	1 Pair SW30
Environmental Conditions	Wireless Module	Wi-Fi 802.11ax/ac (2.4 Ghz/5 Ghz)		
	Bluetooth (5.2)	Yes	Yes	Yes
	Operation Temperature	0°C- 40°C	0°C- 40°C	0°C- 40°C
	Operation Humidity	10% - 90%RH	10% - 90%RH	10% - 90%RH
	Storage Temperature	-20°C- 60°C	-20°C- 60°C	-20°C- 60°C
Optional PC Module	Storage Humidity	10% - 90%RH	10% - 90%RH	10% - 90%RH
	Altitude	Upto 5000 meters	Upto 5000 meters	Upto 5000 meters
Certification	PC Module	OPS	OPS	OPS
Certification	BIS, ROHS			

** Images used are for illustration purposes only



Toll Free (India) : 1800 2020 990
 For Services & Support : servicesupport@logicav.in
 For Sales Enquiries : sales@logicav.in
 Website : www.logicav.in

