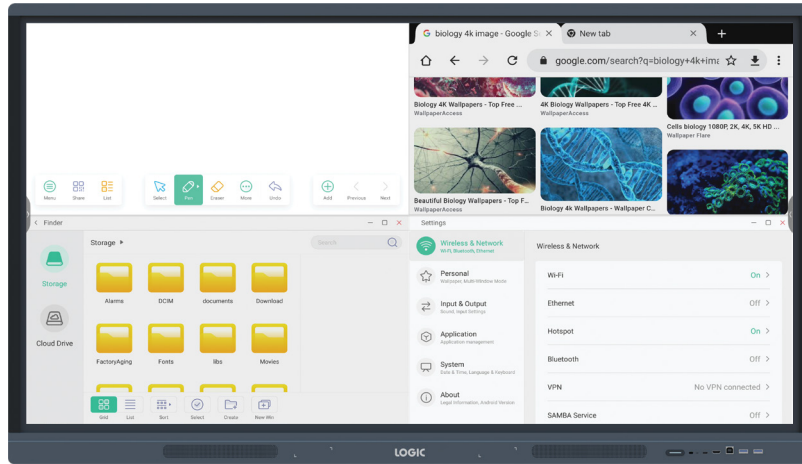


INFINITY

Quad View For Applications



Android 11 OS

Quad-core CPU



4GB RAM



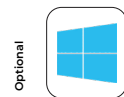
32GB ROM



Dual OS



Android 11



Optional Windows OS (with OPS)

Smooth and Natural Writing Experience



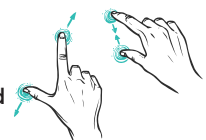
Less than 40ms Latency



Dual-tip Stylus Supports writing with 2 different colors



40-Point touch: Multi-Users can write, draw and mark Simultaneously.

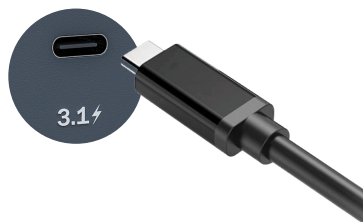


Input/Output Ports



USB 3.0

LAN



High-Speed Data Transmission (1000 Mbps)

New Gen Type-C Compatibility

RAM : 8GB

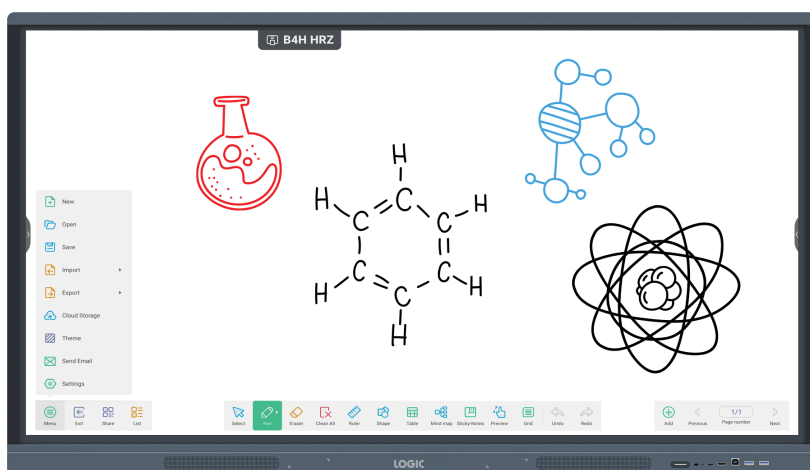
Intel Core i5

ROM
256GB SSD

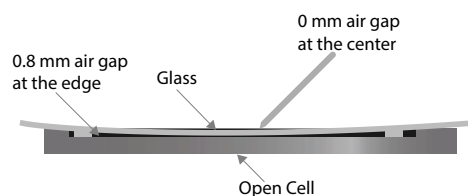


Advanced 11th Gen OPS

Note With Multiple Features



Slim & Sleek Appearance



- Bezel width <15mm
- 3mm glass
- Gen1 Zero bonding

Stunning 4K UHD Visuals



Immersive Interactive Display



Powerful Sound



Built-in speakers in the front bezel deliver audio for immersive learning.

Wireless Screen Share

Supports upto **6** Devices (Android, Windows & iOS)



PRODUCT SPECIFICATION

Model	LT-IR65AX	LT-IR75AX	LT-IR86AX	
Display	Size	65 inch	75 inch	86 inch
	Panel Type	ADS	ADS	ADS
	Back Light Unit	DLED	DLED	DLED
	Response Time	8ms	8ms	8ms
	Aspect Ratio	16:09	16:09	16:09
	Display Area (HxV)	1428.48×803.52mm	1649.664×927.936mm	1895.04×1065.96mm
	Pixel Pitch (HxV)	0.372×0.372mm	0.4296×0.4296mm	0.4935×0.4935mm
	Resolution	3840×2160	3840×2160	3840×2160
	Refreshing Frequency	60Hz	60Hz	60Hz
	Display Color	1.07B	1.07B	1.07B
	Bit Rate	10bit	10bit	10bit
	NTSC Gamut	68%	68%	68%
	Contrast Ratio	1200:1	1200:1	1200:1
	Viewing Angle	178°(H/V)	178°(H/V)	178°(H/V)
	Brightness with glass(min)	400 cd/m ²	400 cd/m ²	400 cd/m ²
Brightness with glass(typ)	450 cd/m ²	450 cd/m ²	450 cd/m ²	
Life Time	≥50,000 Hours	≥50,000 Hours	≥50,000 Hours	
Operating System	System Version	Android 11.0	Android 11.0	Android 11.0
	RAM	4GB	4GB	4GB
	ROM	32GB	32GB	32GB
	CPU	A55×4	A55×4	A55×4
	GPU	Mali G52MP2	Mali G52MP2	Mali G52MP2
Touch System	Sensing Type	Infrared Recognition	Infrared Recognition	Infrared Recognition
	Touch Recognition	Finger,Passive stylus	Finger,Passive stylus	Finger,Passive stylus
	Accuracy	±1.5mm	±1.5mm	±1.5mm
	Touch Point	40	40	40
	Minimum object Size	3mm	3mm	3mm
	Writing Height	≤3mm	≤3mm	≤3mm
Supporting OS	Windows/Android/Linux/Mac OS X/Chrome			
Audio	Audio Output	2.0	2.0	2.0
	Output Power	2×16W	2×16W	2×16W
Power	Power Supply	100-240V, 50/60Hz	100-240V, 50/60Hz	100-240V, 50/60Hz
	Standby Power	≤0.5W	≤0.5W	≤0.5W
	Power Consumption (Typ/Max)	160/320W	200/360W	350/520W
I/O Interface	HDMI In	3	3	3
	HDMI Out	1	1	1
	USB 2.0	1	1	1
	USB Type-C	1	1	1
	USB 3.0	4	4	4
	Touch Out	2	2	2
	VGA In	1	1	1
	Audio/MIC In	1	1	1
	Audio Out	1	1	1
	SPDIF	1	1	1
	RS232	1	1	1
	RJ45 In	1	1	1
RJ45 Out	1	1	1	
Physical Specifications	Dimension (L×H×D)	1488.4×896.6×87.2mm	1709×1020×88mm	1957×1160×100mm
	Package Dimension (L×W×H)	1628×208×1005mm	1863×225×1140mm	2110×225×1283mm
	VESA	600×400mm	800×400mm	800×600mm
	Net Weight	34.95Kg	47.30Kg	58.55Kg
	Gross Weight	44.70Kg	60.55Kg	75.90Kg
Accessories	Power Cord	1	1	1
	HDMI Cable	1	1	1
	USB Touch Cable (Type A-B)	1	1	1
	Remote Control	1	1	1
	Writing Pen	2	2	2
Environmental Conditions	Operation Temperature	0° C ~ 40° C	0° C ~ 40° C	0° C ~ 40° C
	Operation Humidity	10% ~ 90%RH	10% ~ 90%RH	10% ~ 90%RH
	Storage Temperature	-20° C ~ 60° C	-20° C ~ 60° C	-20° C ~ 60° C
	Storage Humidity	10% ~ 90%RH	10% ~ 90%RH	10% ~ 90%RH
	Altitude	Below 5000 Meter	Below 5000 meter	Below 5000 meter
Optional PC Module	PC Module	OPS62A	OPS62A	OPS62A
	Wireless Module	SI07	SI07	SI07
Certification	BIS, EMC, CE, FCC, UKCA			

INFINITY

LEARNING MADE IMMERSIVE

Address

No. 741, Sri Krishna Temple Road,
Parallel to CMH Road, 1st Stage Indiranagar,
Opp Cake Walk, Bengaluru, Karnataka 560038

**Customer Support Centre**

Toll Free : 1800 2020 990
For Services & Support : servicesupport@logicav.in
For Sales Enquiries : sales@logicav.in
Website : www.logicdisplays.in

