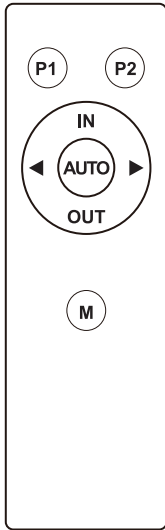


5. The Remote Control Operating Instructions



Remote Control Operating Instructions:

- STEP-1: When the motorized wall mount is powered on, you will hear it beeps once and the system is now on standby.
- STEP-2: Minimum angle set up. Keep pressing M button, and then press IN button, current position memorized successfully after the buzzer sounds once .(If mount do not retuen to rest again the wall,Keep pressing M button,then press ↓ button, mount will return for 3 seconds more)
- STEP-3: Max angle set up. Keep pressing M button, and then press OUT button, current position memorized successfully after the buzzer sounds once .
- STEP-4: Memory position set up. Keep pressing M+P1 button / M+P2 button, current position memorized successfully after the buzzer sounds once .

Buttons function:

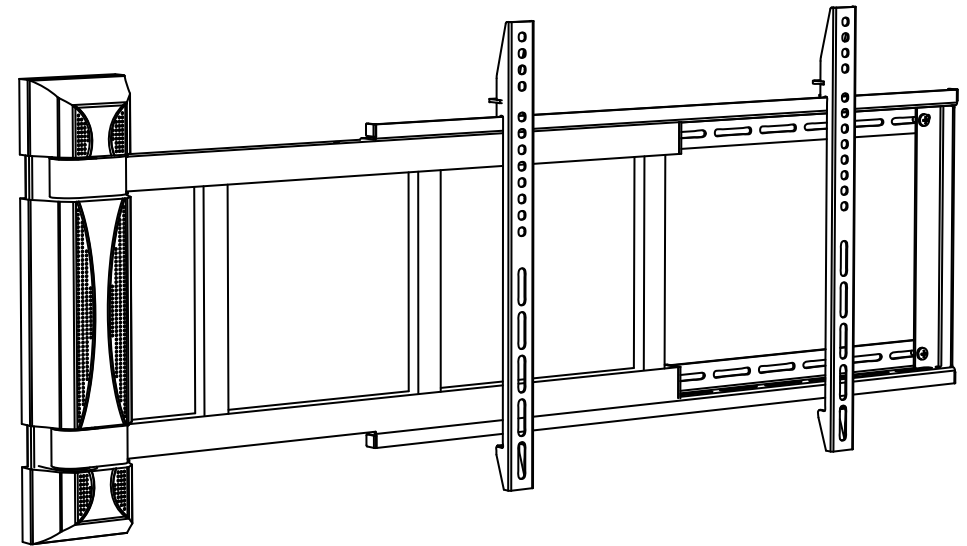
IN button. Press and release IN, TV wall mount will swivel to the right and stop when IN is pressed, or will swivel to minimum angel which have set up. OUT button. Press and release , TV wall mount will swivel to the left and stop when OUT button is pressed, or will swivel to max angel which have set up. P1/P2 Memory button.Press and release P1/P2 button, wall mount will swivel to angel which have set up before.

NOTE:

- The motorize mount can't be moved when you use the remote, and the buzzer beep twice.It means the motorized mount has reached the position which have set up in original.
- The motorized mount can't be moved when you use the remote, and the buzzer beep twice three times alarm.
- When operating the remote control, and TV has been turned to the wall and stopped, but the buzzer does not beep.Because the angle of the bracket adjustment is beyond the maximum value.

INSTALLATION MANUAL

MOTORIZED WALL MOUNT - HORIZONTAL SWIVEL ADJUSTABLE



MODEL	SERIES	VESA	DISPLAY SIZE	MAX LOAD
LGWM-3270SW-M	MOTORIZED WALL MOUNT	200x200 to 600x400	32" to 70"	95 lbs (43 kg)

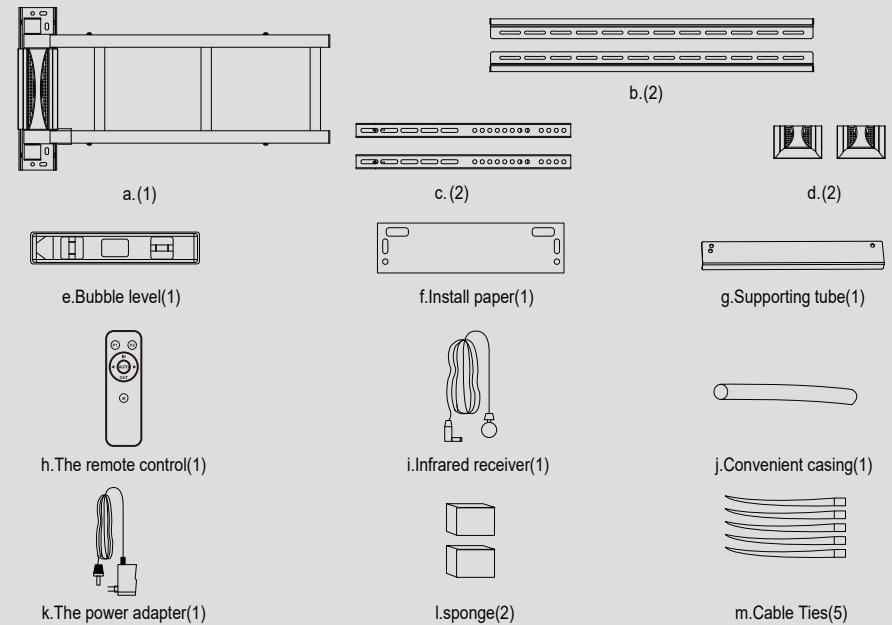
NOTE: Read the entire instruction manual before you start installation and assembly.

⚠ WARNING

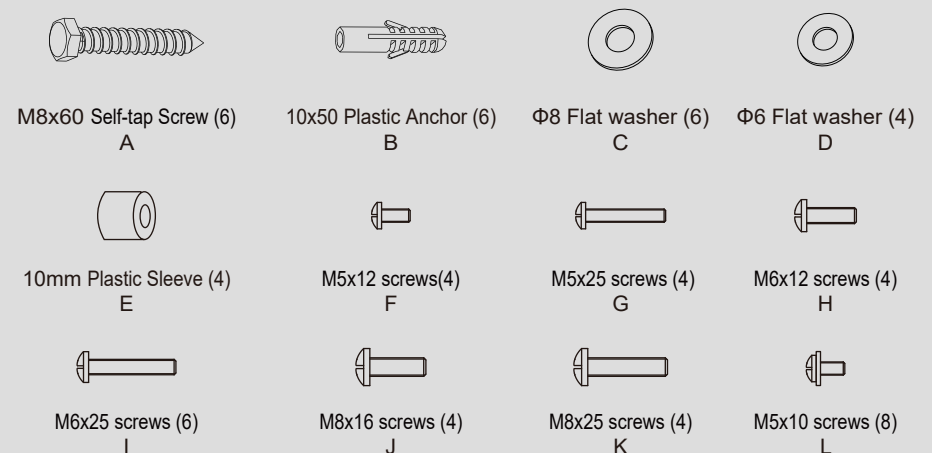
- Do not begin the installation until you have read and understood all the instructions and warnings contained in this installation sheet. If you have any questions regarding any of the instructions or warnings, please contact your local distributor.
- This mounting bracket was designed to be installed and utilised ONLY as specified in this manual. Improper installation of this product may cause damage or serious injury.
- This product should only be installed by someone with good mechanical ability who has basic building experience and fully understands this manual.
- Make sure that the supporting surface will safely support the combined weight of the equipment and all attached hardware and components.
- If mounting to wood wall studs, make sure that mounting screws are anchored into the center of the studs. The use of a stud finder is highly recommended.
- Always use an assistant or mechanical lifting equipment to safely lift and position the equipment.
- Tighten screws firmly, but do not over tighten. Over tightening can cause damage to the items, This greatly reduces their holding power.
- This product is intended for indoor use only. Using this product outdoors could lead to product failure and personal injury.

Component Checklist

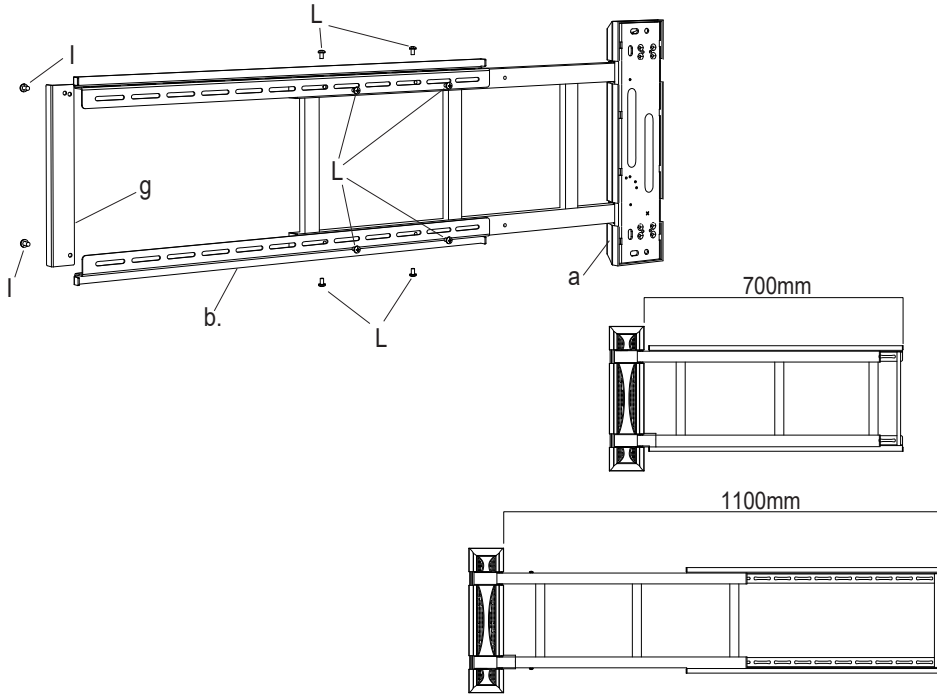
IMPORTANT: Ensure that you have received all parts according to the component checklist prior to installation. If any parts are missing or faulty, telephone your local distributor for a replacement.



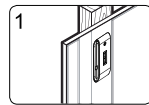
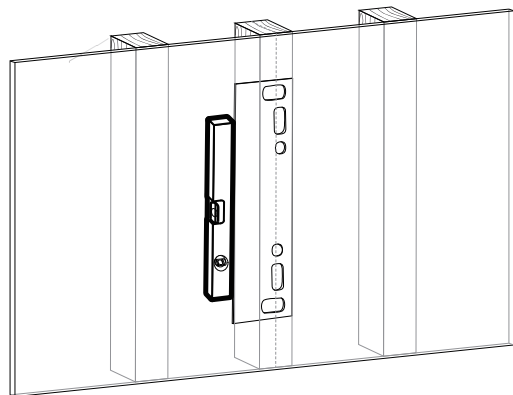
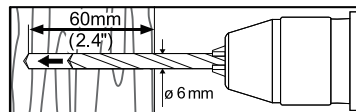
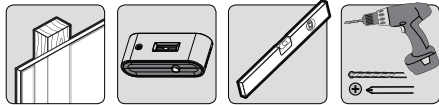
Package



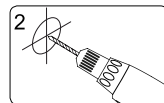
1. Products assembly



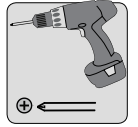
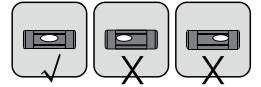
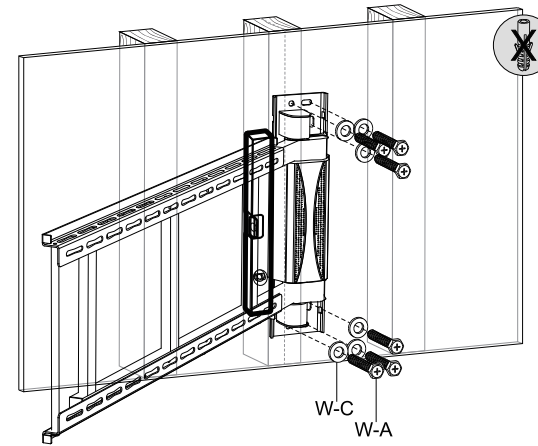
2a. For Wood Stud Wall Mounting



1
Find and mark the exact location of mounting holes



2
Drill pilot holes

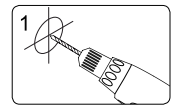
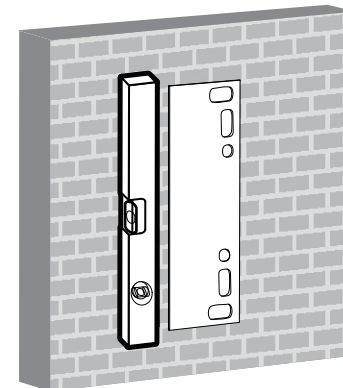
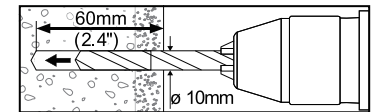
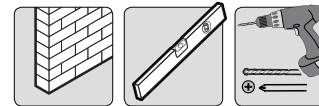


Screw the wall plate onto the wall

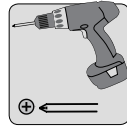
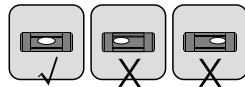
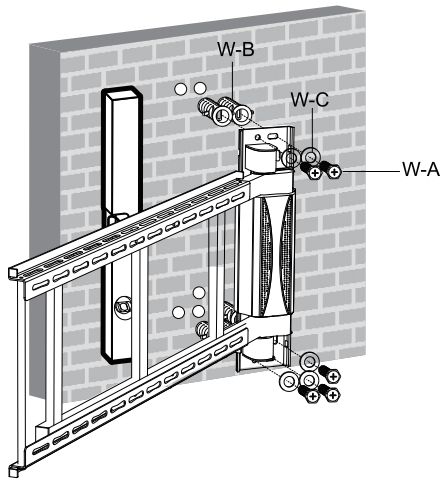
⚠ WARNING

- Make sure that mounting screws are anchored into the center of the studs. The use of a stud finder is highly recommended.
- Installers are responsible to provide hardware for other types of mounting situations.
- Installers must verify that the supporting surface will safely support the combined weight of the equipment and all attached hardware and components.

2b. For Solid Brick and Concrete Mounting



1
Drill pilot holes

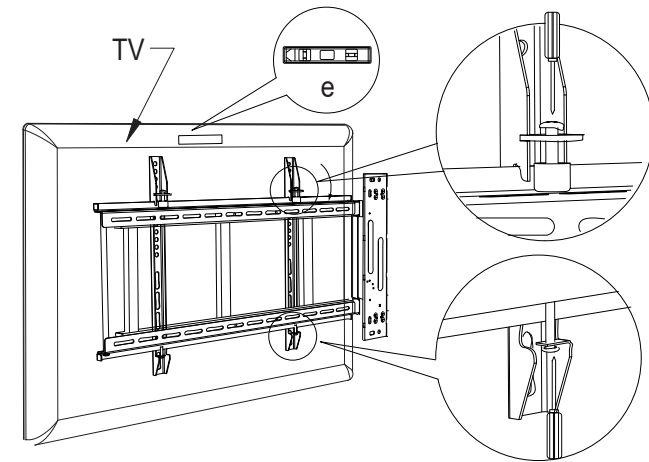
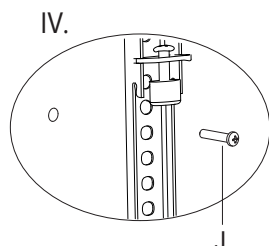
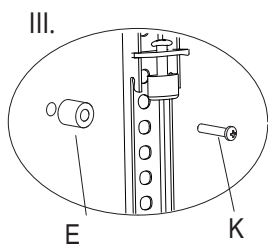
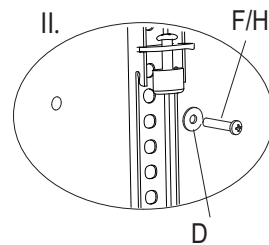
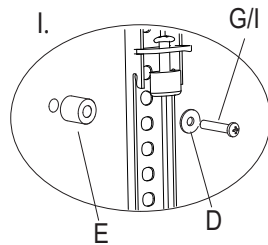
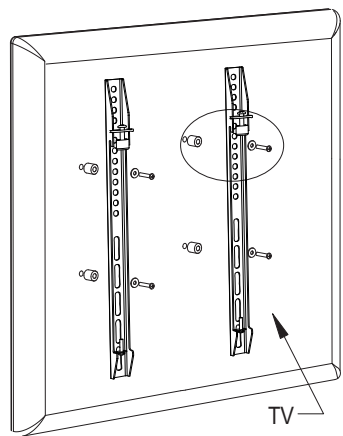
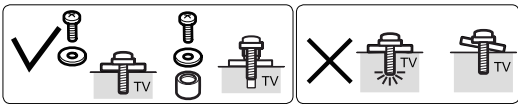


Screw the wall
plaet onto
the wall

WARNING

Installer must verify that the supporting surface will safely support the combined weight of the equipment and all attached hardware and components.

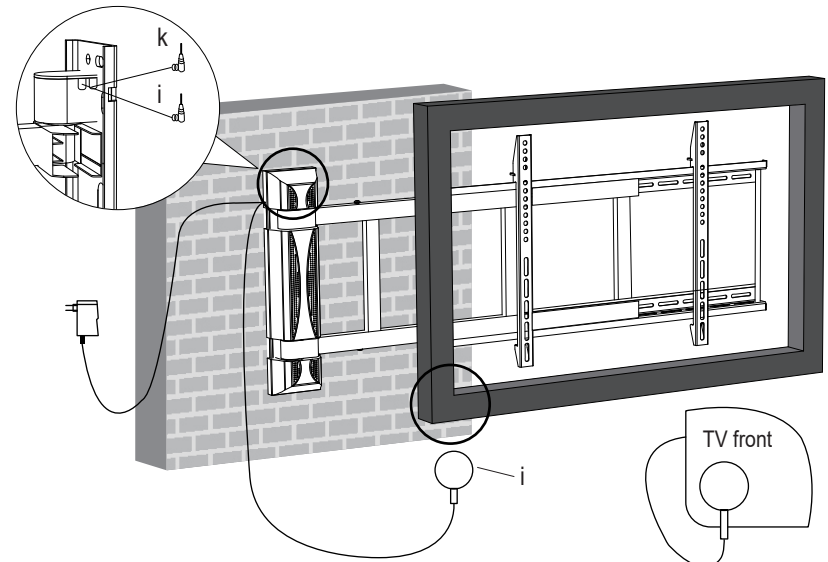
3. Installing the Display



Note: Choose the appropriate screws, washers and spacers (if necessary) according to the type of screen.
• Lift the display and match the holes on your display with the holes on the mount. Secure your display to the mount by tightening screws.

! Tighten all screws but do not over tighten.

4. Placing the IR Receiver



Notice: Please leave the cable long enough to provide the free swivel of TV.